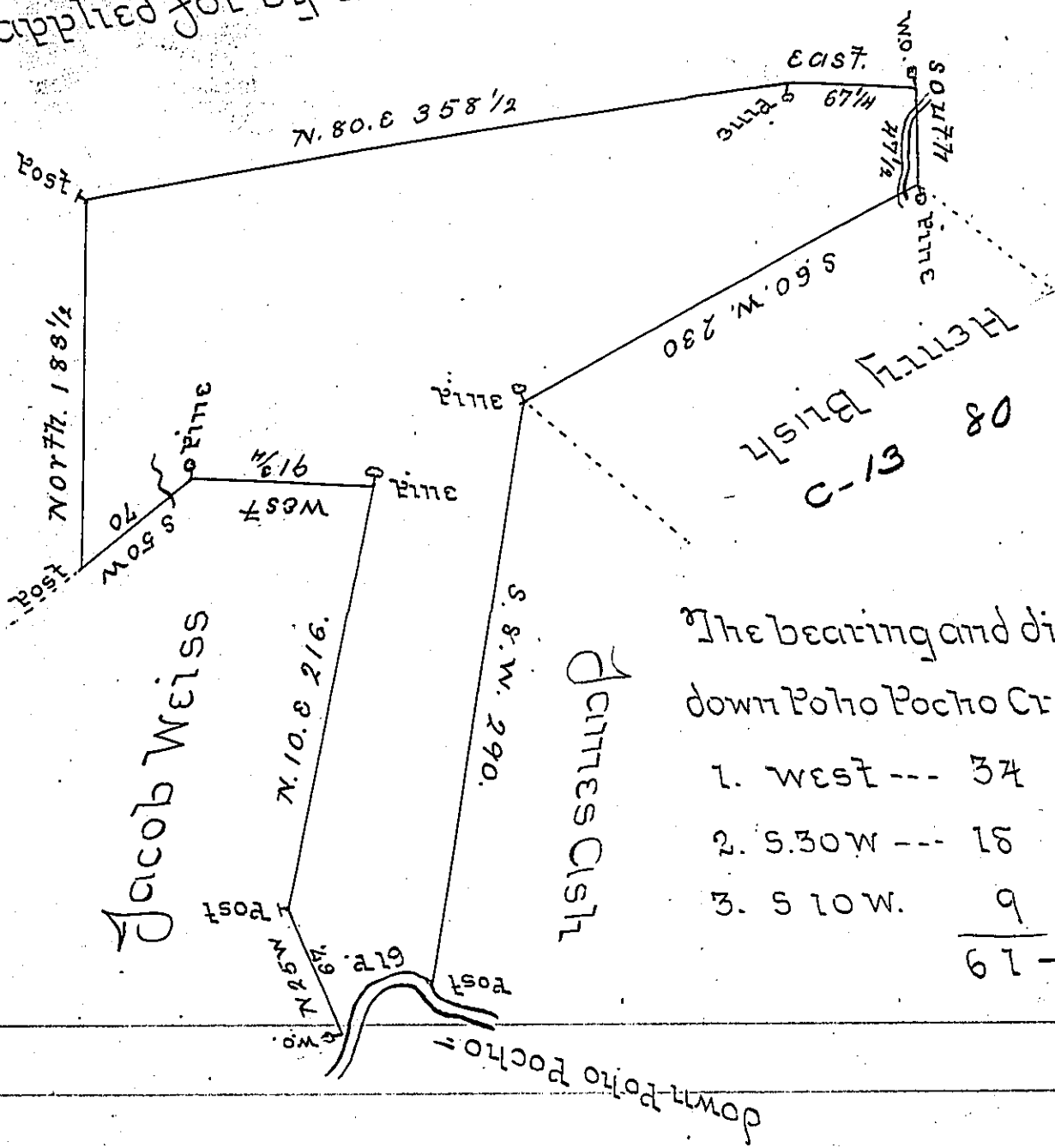


C/30-224
Land applied for by Thomas Craig and John Bugh



The bearing and distance down Poho Poho Creek are

- 1. west --- 34
 - 2. S. 30 W --- 18
 - 3. S 10 W. 9
- 61 -

By Virtue of a Warrant dated the 21st January 1794
 Surveyed the 26th April 1794 ~~Surveyed~~ to John
 Kline the above described tract of land situate in
 Lowmensing Township Northampton County
 Containing four hundred and thirty five Acres ^{100^{rs}} and
 the Allowance of six Percent &c

P-Geo Palmer U.S.

To Daniel Brodhead Esquire
 Surveyor General

IN TESTIMONY that the above is a copy of the original remaining on file in
 the Department of Internal Affairs of Pennsylvania, made
 conformably to an Act of Assembly approved the 16th day of
 February, 1833, I have hereunto set my Hand and caused
 the Seal of said Department to be affixed at Harrisburg,
 this eight day of July 1905.

Geo. D. Palmer
 Secretary of Internal Affairs.